

WRATH



inspired by
FASHION





SOMETIMES THE SMALLEST DETAIL – LIKE A STITCH-FREE TWO-TONE NATURAL GRAIN LEATHER STEERING WHEEL – MAKES THE BIGGEST IMPRESSION.

Two-tone natural grain leather steering wheel in Jasmine Green and Black, Rolls-Royce Motor Cars.

Black bodysuit, Alon Livne.
Cream latex skirt, House of Harlot. Black latex driving gloves, House of Harlot.
Black shoe boots, Lele Pyp.

FASHION LINE

Strong, confident and forever in vogue, Wraith Inspired by Fashion gives classic monochrome a fresh, modern makeover. Pattern play, Bespoke detailing and uncompromising design all have their part to play in this style story. *Bespoke design by Rolls-Royce Motor Cars.*



TWO-TONE
WHITE-ON-WHITE
PUNCTUATED WITH
A BOLD FLASH OF
COLOUR BEAUTIFULLY
ACCENTUATES WRAITH'S
CONFIDENT LINES.

Hand painted Jasmine
Green Feature Line on an
Andalusian White and Arctic
White two-tone exterior;
Rolls-Royce Motor Cars.

Left: White dress, Amanda
Wakeley. White blazer, Joseph.
White trousers, Joseph.
White boots, Guiseppi Zanotti.

Right: White dress, Stephane
Rolland Haute Couture.
Tan leather gloves, Causse Gantier.
Black shoes, Crisian London.



THE UNDERSTATED ELEGANCE OF ALL-WHITE ATTIRE SCREAMS STYLE AND SOPHISTICATION.

Whisper-quiet twin-turbo 6.6 litre V12 engine, Rolls-Royce Motor Cars.

Left: White dress, Amanda Wakeley. Black sandals, Kurt Geiger. Leather neck piece, YVY.

Right: White dress, Yvna Kim. Chrome bracelets, Uribe. Black cage shoes, Crisian London.

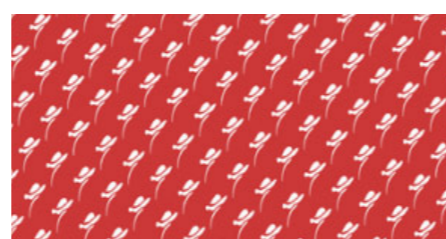
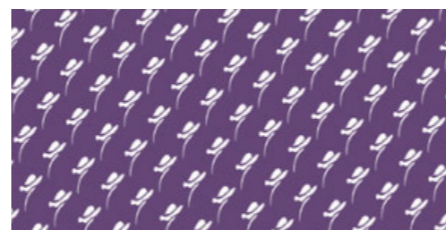
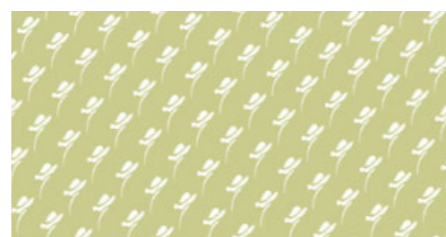
GET THE LOOK

Simplicity and luxury combine in refined, minimalist features that speak volumes. In contrast, interior details reveal a unique take on classic couture, with stylish silks, pattern play and decorative textures.

Vibrant leather seat piping, contrast stitching and Rolls-Royce headrest monograms stand out against clean Arctic White natural grain leather, adding textural and visual interest. Or go monochrome to the max and switch cool Arctic White for high-impact Black.



The subtle silk welt detail provides a flash of colour, seamlessly connecting the front and rear interior space.



Bespoke geometric silk pocket linings that match the vivid accent colours provide the same elegant surprise as the most desirable suiting, shoes and accessories.

Mirroring the design lines of the paneling, the abstract Spirit of Ecstasy design – exclusive to Wraith Inspired by Fashion – runs across the car at an angle of 55 degrees, with each Spirit of Ecstasy facing the front of the car.

Set your own stylish take on Wraith Inspired by Fashion with one of three accent colours. Jasmine Green softly complements the white-on-white colour scheme. Mugello Red is a classic Rolls-Royce colour, much-loved by many owners. Tailored Purple is an original Wraith launch colour, creating a seamless connection with the model's origins.

The two-tone natural grain leather steering wheel has a stitchless seam, giving it a unique tactile quality.



Complete the look with stylish luggage which complements the car, coming soon exclusively to Rolls-Royce Motor Cars.



A two-tone Arctic White and Andalusian White exterior elegantly takes chic minimalism to brave new extremes.

A hand-painted Feature Line adds a flash of colour to the white-on-white paintwork, highlighting Wraith's clean, elegant lines.



A clever balance of polished textures and shades, the Bespoke Inspired by Fashion clock is a true modern classic.

A subtle, pearlescent finish beautifully accentuates the clean, minimalism of the polished, white fascia, giving the entire piece a jewel-like quality.



ULTRA-LUXE FABRICS
CREATE AN ORIGINAL
TAKE ON CLASSIC
TAILORING WITH
BESPOKE SPIRIT OF
ECSTASY PRINT SILK
OFFSET AGAINST
PRECISION CUT
NATURAL GRAIN
LEATHER.

Bespoke door panels
with Jasmine Green
silk welt detailing and
Bespoke Spirit of Ecstasy
print silk pocket lining,
Rolls-Royce Motor Cars.

*Black and white dress,
Halston Heritage.
Black, leather gloves,
Causse Gantier.
Monochrome latex knee
socks, House of Harlot.
Black shoe boots,
Crisian London.*



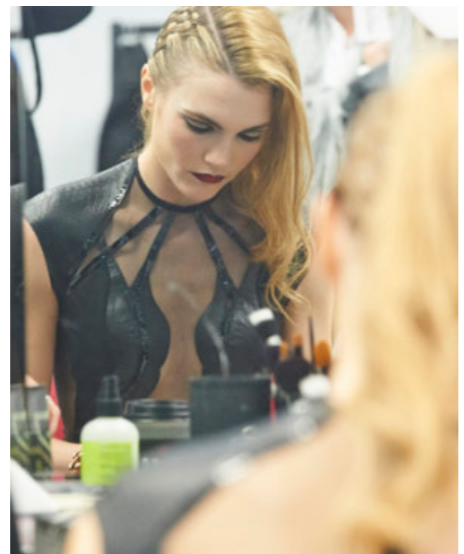
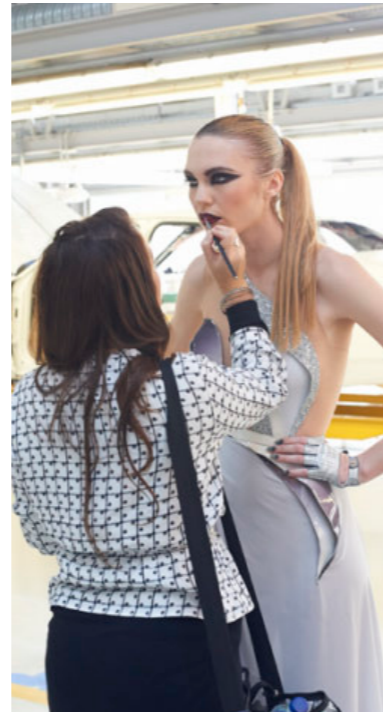
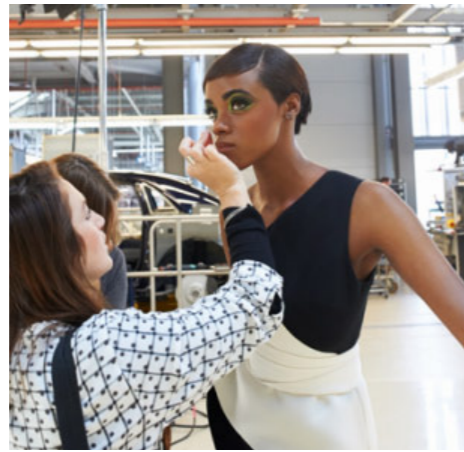
IMMACULATE
TONE-ON-TONE
WHITE PAINTWORK
HAS AN AIR OF
SOPHISTICATED
SIMPLICITY, SHOWING
OFF WRAITH'S
FLAWLESS PIANO
FINISH TO THE MAX.

Hand-polished
two-tone exterior
with fastback design.
Rolls-Royce Motor Cars.

Left: Black and
white dress, Alon Livne.
Black sandals,
Gianmarco Lorenzi.

Right: Black and
white dress, Alon Livne.
Black and white sandals,
Gianmarco Lorenzi.

BEHIND THE LINE



COVER LOOK



**Wraith Grille in
Chromed Steel,
Rolls-Royce Motor Cars.**

*White dress, Annie Swain.
Metallic belt, Saint Laurent Vintage.
Black latex gloves, House of Harlot.
White, open-toe boots, Gina.*

*Grey dress, Alon Livne.
Metallic latex gloves, Causse Gantier.
White sandals, Gina.*

Exclusive behind the scenes images of the Wraith Inspired by Fashion photography. Shot by Sean de Sparenco on the production line at Goodwood, the Home of Rolls-Royce. This is the first-ever shoot of this kind, bringing the car and its fashion inspiration back together in the place it was conceived.

Wraith Inspired by Fashion is available to order now in Rolls-Royce dealerships.

Contact your local dealer



© Copyright Rolls-Royce Motor Cars NA, LLC 2015. Not to be reproduced or transmitted. The Rolls-Royce name and logo are registered trademarks and are owned by Rolls-Royce Motor Cars Limited and are used by Rolls-Royce Motor Cars NA, LCC with permission. All illustrations and specifications are based upon current information available as at May 2015. Colours may vary. Rolls-Royce Motor Cars NA, LLC reserves the right to make changes at any time without notice. Rolls-Royce Motor Cars NA, LLC makes all reasonable efforts to provide accurate information, however, there is no guarantee of accuracy. No liability is assumed by Rolls-Royce Motor Cars NA, LLC.